

October 26, 2017

Alaska Population Data Resources

Eddie Hunsinger
Alaska Department of Labor
and Workforce Development



Cover slide

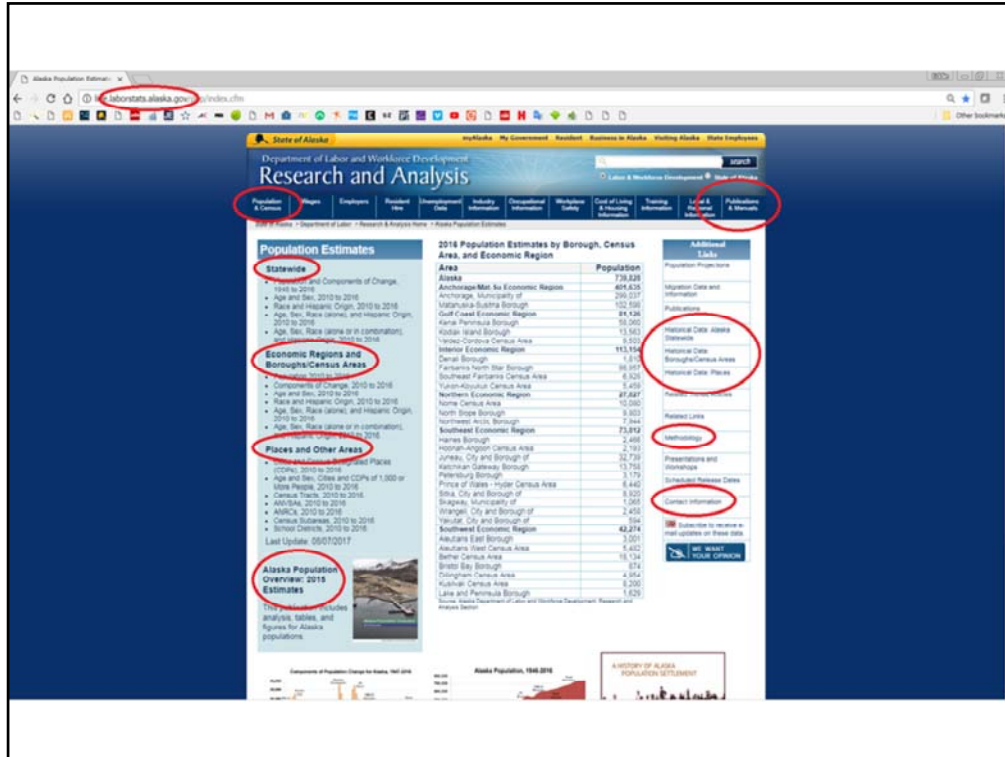


Talk about what all we have and I'll focus on/cover (list), and note the Population and Census Unit and fundamentals of what we do

Population data: Uses

- Population data are used for a wide range of purposes, including:
 - Distribution of resources
 - Survey weighting
 - Research and planning
 - Legislative redistricting

Uses of population data (incl estimates, as well as projections and esp Census)



Data are all on our website, and you can contact me/us anytime too

Annual state, borough, census area, city, census designated place, census tract, and other special area population estimates

State, borough and census area estimates by age, sex, race and ethnicity

Estimates by age and sex for cities and places of 1,000+

All data except race and ethnicity are published in January. Race and ethnicity data are published in August

Population Estimates: How we make them

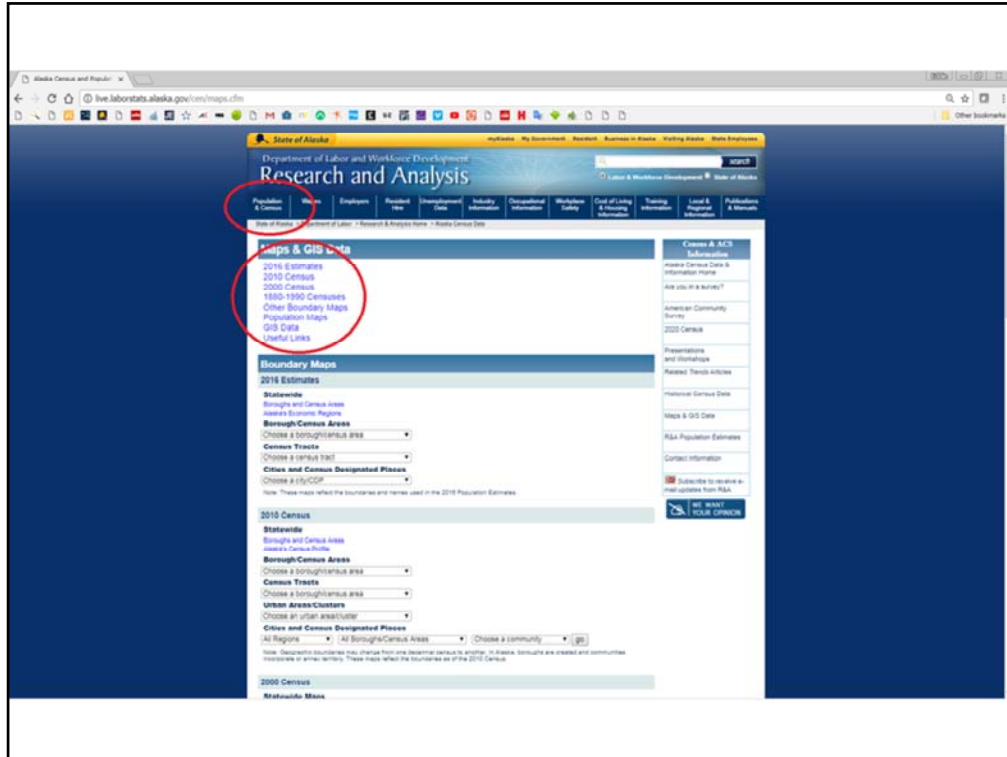
- For total population, and population by age and sex, we begin with the last decennial census (2010 Census)
- Create ratios of census counts to PFD recipients in the census year, and carry them forward each year until the next census
- Adjust to a separately estimated state total
- There are several additional procedures to account for military, prisons, dorms, etc.

Methods, briefly

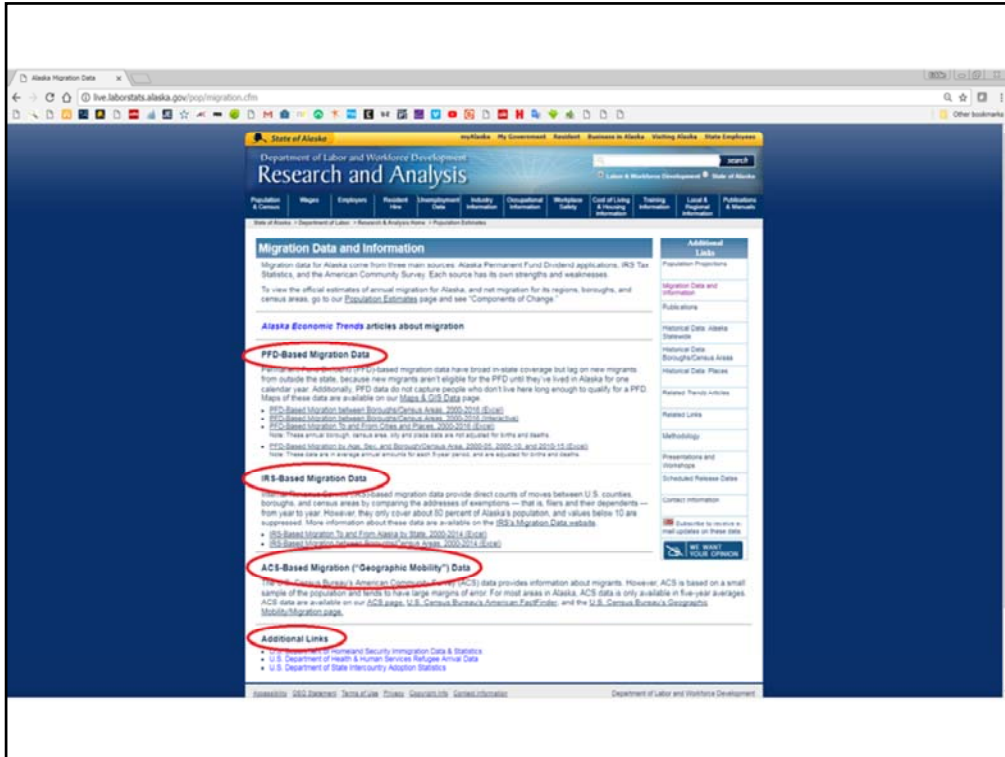
Population Estimates: How we make them (continued)

- Race and ethnicity are not included in the PFD data, so we combine our estimates by age and sex with Census data by race and ethnicity
- Make race data to follow three categorizations:
 - Race alone
 - Race alone or in combination with one or more other races
 - Bridged (1977 OMB)

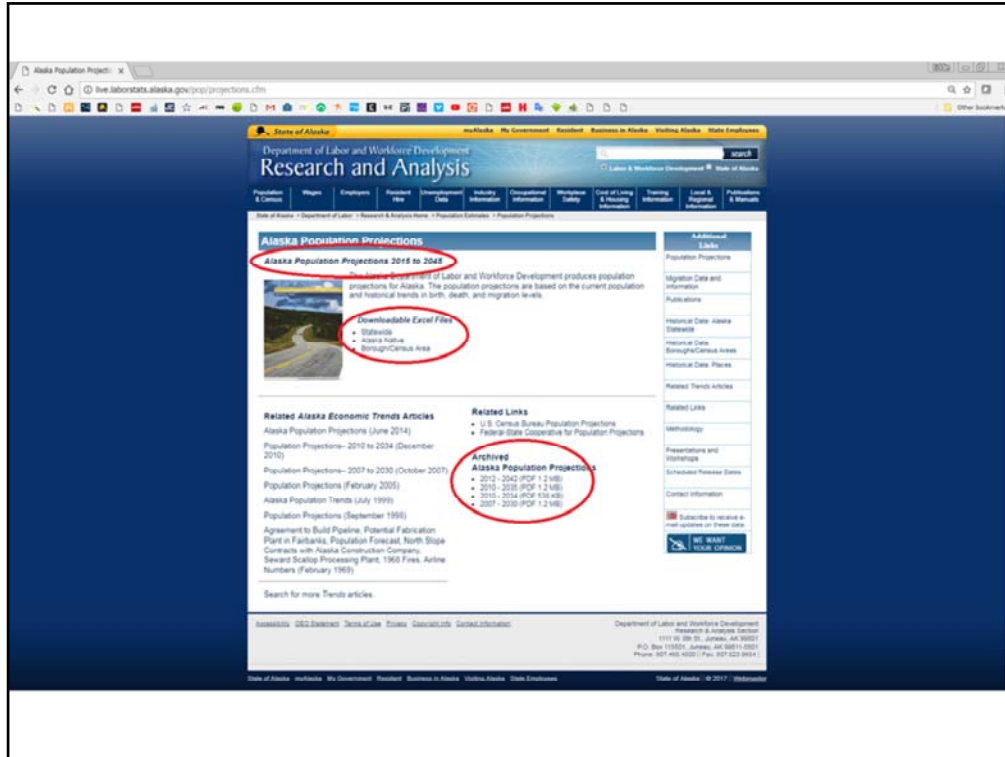
Methods, briefly



Data are all on our website, and you can contact me/us anytime too



Data are all on our website, and you can contact me/us anytime too



Data are all on our website, and you can contact me/us anytime too

State, borough, and census area projections by age and sex, with 30 year horizon

Multiple migration scenarios for the statewide population

Projections for the statewide Alaska Native (alone or in combination) population by age and sex

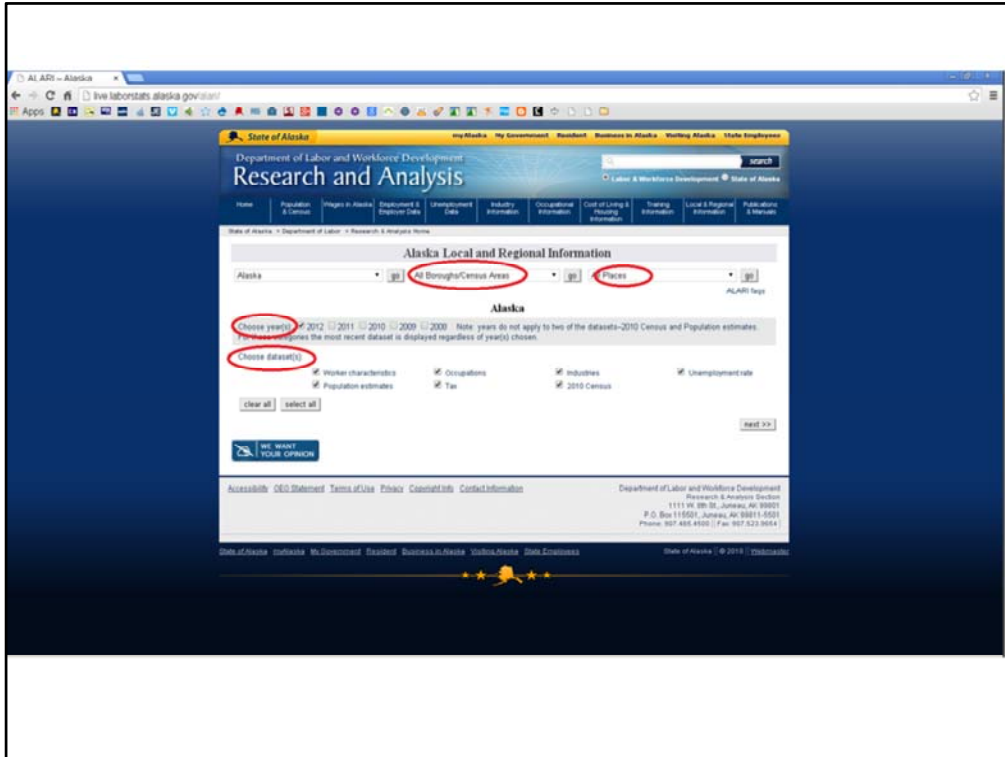
Released in spring of even-numbered years

Annual PFD-based migration tabulations for each borough, census area, city, and census designated place

Released in January each year

Five year averages of PFD-based migration by age and sex with adjustment for births and deaths for the state and each borough and census area

Released every five years



ALARI details - Sci

live laborstats.alaska.gov/alari/details.cfm?yr=2012&st=018&sd=035&sp=044&sd=054&sd=126&sd=096&sd=115&sd=078&st=2&st=207

State of Alaska | my Alaska | my Government | Feedback | Business in Alaska | Working Alaska | State Employees

Department of Labor and Workforce Development
Research and Analysis

Home | Population & Census | Progress in Housing | Employment & Unemployment Data | Industry Information | Occupational Information | Cost of Living & Housing Information | Training Information | Local & Regional Information | Publications & Reports

State of Alaska > Department of Labor > Research & Analysis Home > ALARI Home

Print or View PDF

Alaska Local and Regional Information

Gulf Coast | Kenai Peninsula Borough | **Soldotna**

Please note: There is an important distinction between the local/regional employment data and our "standard" employment series. [Read more here.](#)

Soldotna city

Note: Soldotna is a first class city located on the Kenai Peninsula, about 150 highway miles south of Anchorage. It lies at the junction of the Sterling and Kenai Spur Highways.

[Department of Commerce, Community, and Economic Development community profile](#)

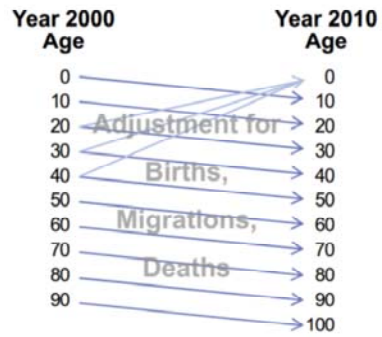
Market Information | Demographic Information | Economic Activities | Home Housing Units | Tax | Property Value | 2010 Census

Worker Characteristics (Total for all years)

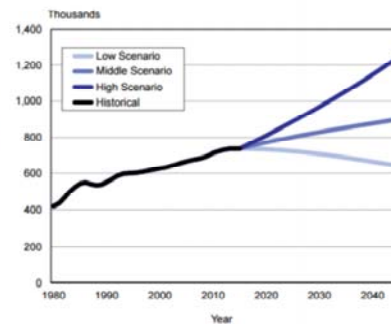
| | 2012 | |
|--|--------------|--|
| Residents age 16 and over | 3,306 | |
| Residents employed | 1,997 | |
| Female workers | 980 | |
| Male workers | 1,009 | |
| Workers age 65 and over | 806 | |
| Workers age 50 and over | 813 | |
| Total wages | \$63,666,946 | |
| Sector employed in | | |
| Private | 1,841 | |
| Local government | 250 | |
| State government | 96 | |
| Peak quarterly employment | 1,850 | |
| Workers employed all 4 quarters | 1,429 | |
| New hires | 661 | |
| Unemployment insurance claimants | 342 | |
| Worked in an occupation | 1,241 | |

Population Projections: How we make them

The Cohort-Component Method



Total Population, Alaska, 1980 to 2045



Methods – cohort component based on recent historical data on births, migration and deaths

2020 Census Importance: Funding

- In fiscal year 2015 alone, Alaska received almost **\$3,000 per capita** through federal assistance programs that distribute money based on decennial census-derived statistics. (Analysis from George Washington University.)
- These programs included:
 - Medicaid (more than \$1 billion)
 - Highway Planning and Construction (more than \$500 million)
 - Supplemental Nutrition Assistance (almost \$170 million)

A lot of funding tied to Census

2020 Census Importance: Redistricting and research

- State and federal redistricting are completed every ten years based on data from the decennial census
- Countless statistics throughout the decade use decennial census data in one way or another
 - Population, employment, education, health, crime...

Critical for successful redistricting and accurate data

2020 Census: Activities and items on our radar

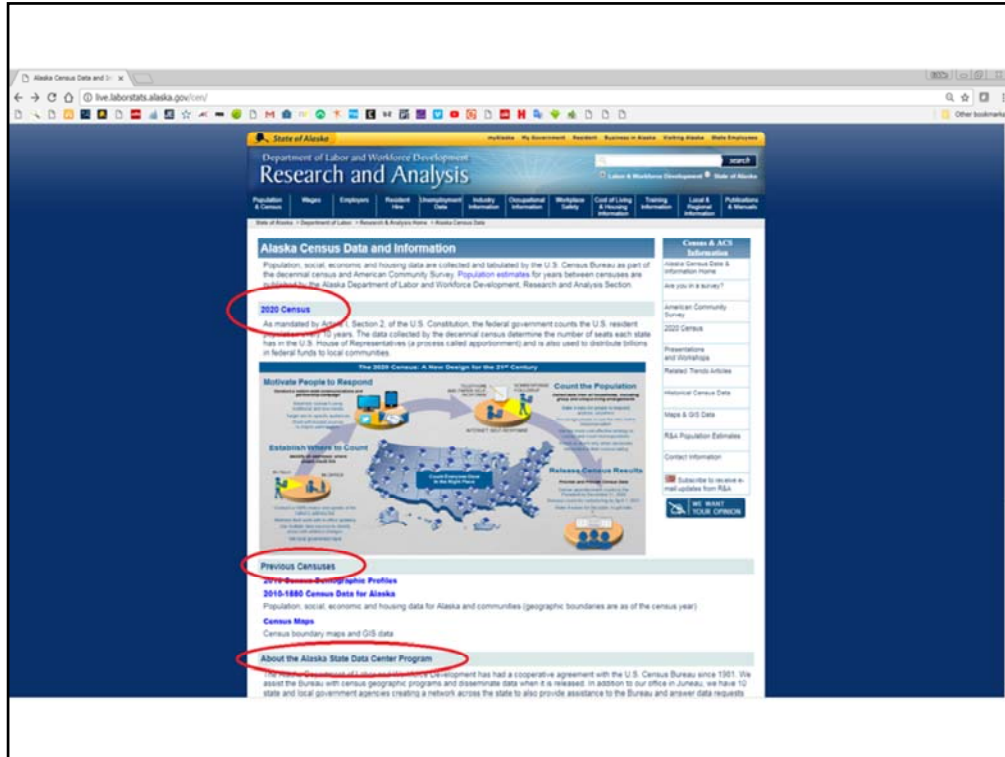
- Local Update of Census Addresses
- Feedback on the “Types of Enumeration Areas” in Alaska
- Requesting use of post office boxes in Alaska for outreach materials
- Geographic partnership programs
 - Boundaries and Annexations
 - Redistricting

Some partnership programs, and some things we are requesting

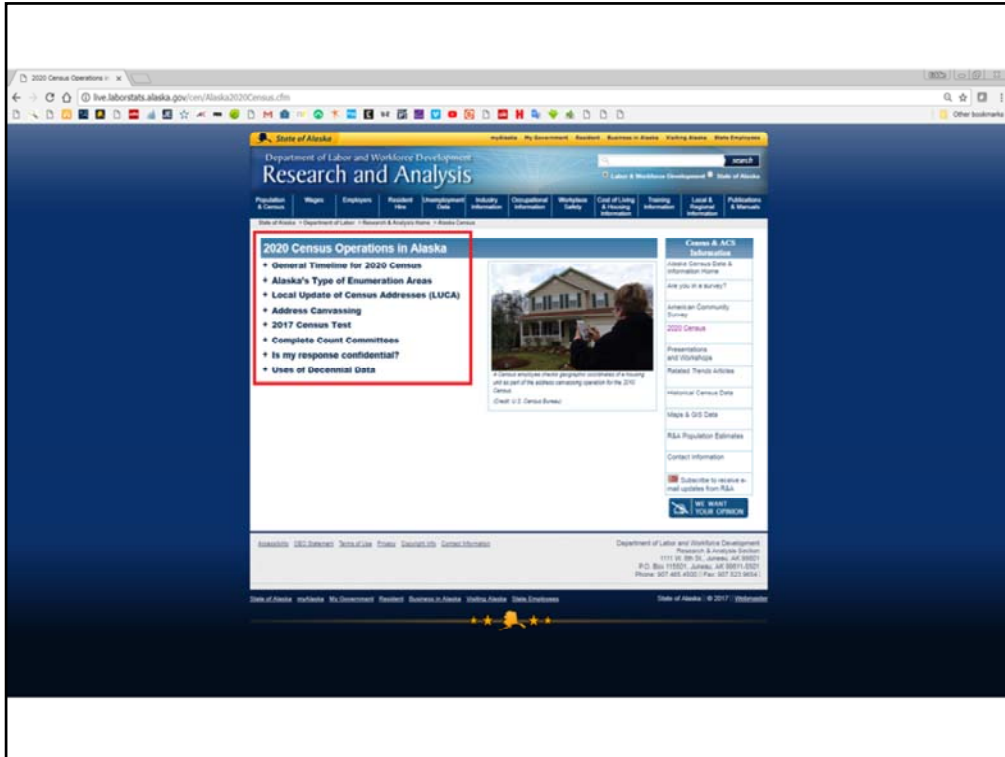
2020 Census: Voices from Alaska

- Local data managers and stakeholders
- State data managers (incl many beyond our office) and stakeholders
- Alaska Census Working Group, convened by the Foraker Group

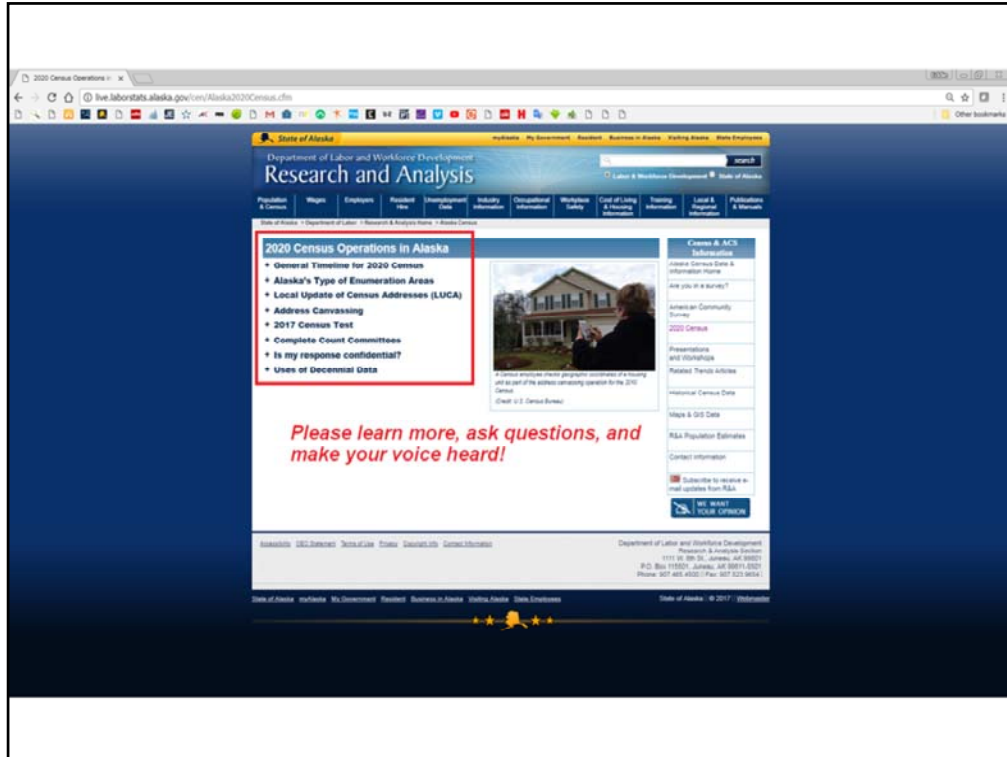
Census is working with many partners – many “partnership programs” – and Alaska Census Working Group is an example of a ~proactive group (note voices in attendance). There will also be “Complete Count Committees as we get closer to the Census



A great deal of Alaska-specific info on our website!



A great deal of Alaska-specific info on our website!



A great deal of Alaska-specific info on our website, and intro to Linda's work!

Thank you!

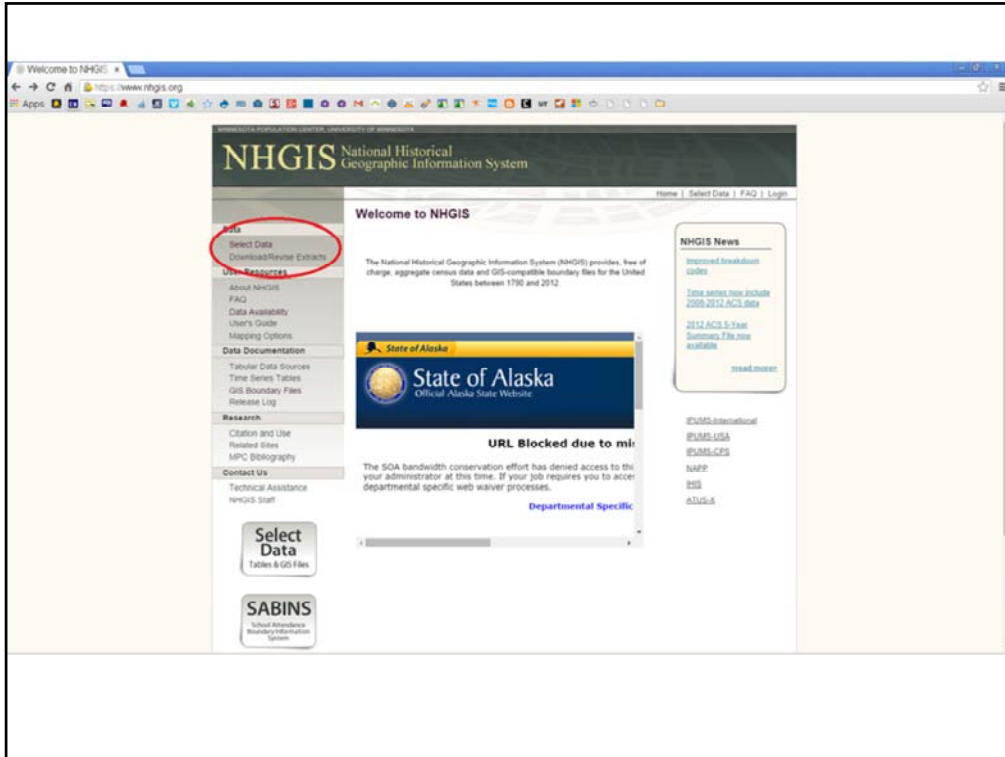
Contact: eddie.hunsinger@alaska.gov

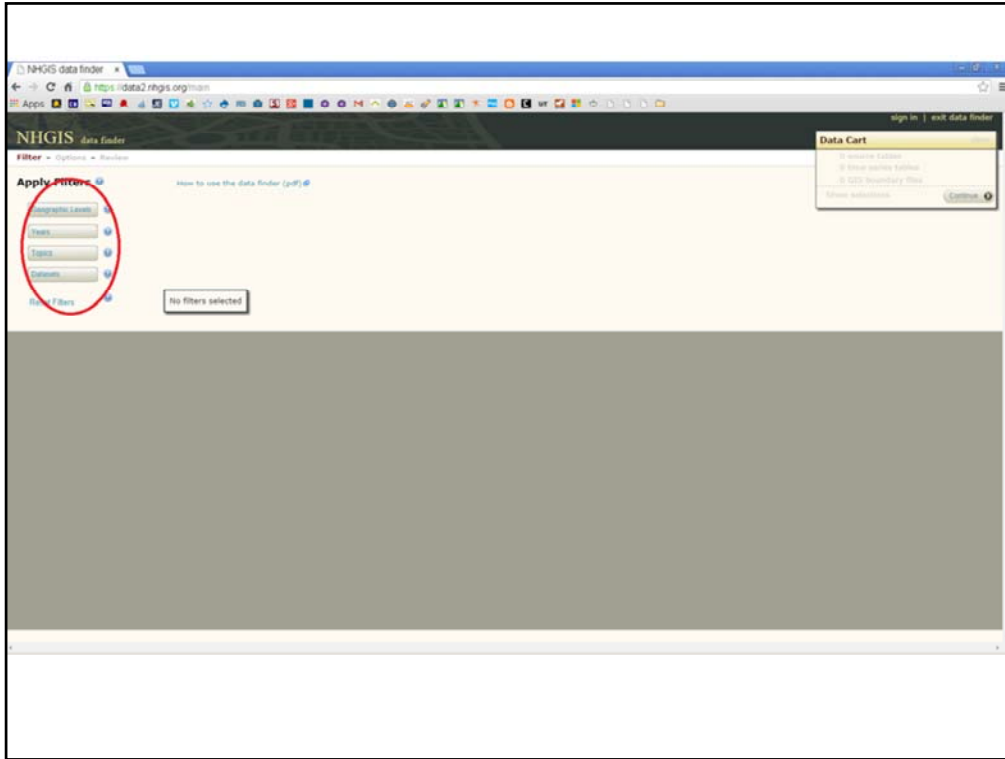
More information:
<http://laborstats.alaska.gov/>

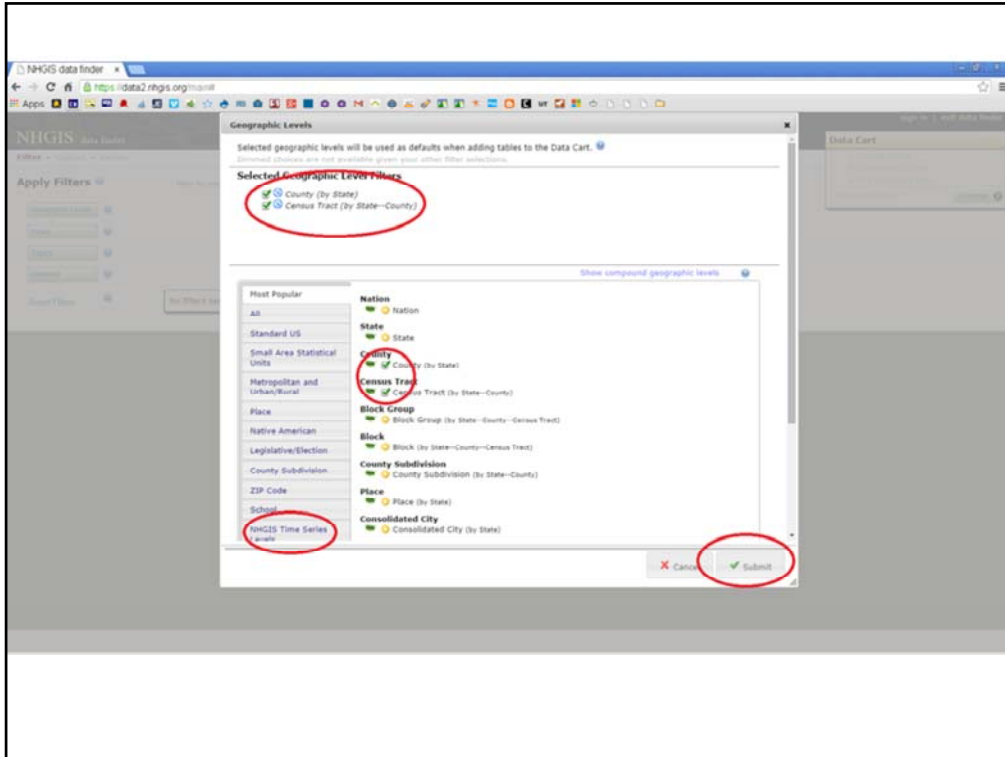


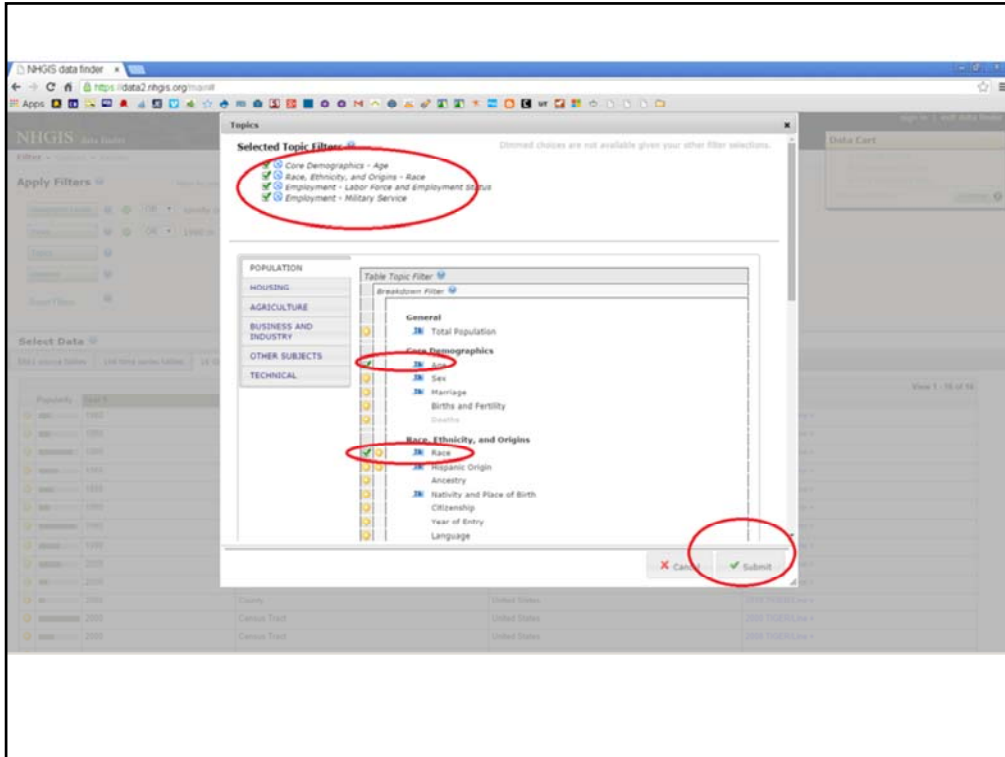
ALASKA DEPARTMENT OF LABOR
& WORKFORCE DEVELOPMENT

End – thanks and contact info









NHGIS data finder

Filter - Options - Review

Apply Filters

Geographic Levels: OR county or tract

Years: 1980 or 1990 or 2000 or 2008-2012

Topics: AND Age and Labor Force and Employment Status and Military Service and Race

Reset Filters

Data Cart

2 GIS boundary files

Show selections

Select Data

15 source tables 10 time series tables 3 GIS boundary files

| Popularity | Year | Geography | Extent | Basin |
|-------------------------------------|------|--------------|---------------|------------------|
| <input checked="" type="checkbox"/> | 2000 | County | United States | 2000 TIGERLine + |
| <input checked="" type="checkbox"/> | 2000 | County | United States | 2008 TIGERLine + |
| <input checked="" type="checkbox"/> | 2000 | County | United States | 2010 TIGERLine + |
| <input checked="" type="checkbox"/> | 2000 | Census Tract | United States | 2000 TIGERLine + |
| <input checked="" type="checkbox"/> | 2000 | Census Tract | United States | 2008 TIGERLine + |
| <input checked="" type="checkbox"/> | 2000 | Census Tract | United States | 2010 TIGERLine + |
| <input checked="" type="checkbox"/> | 2012 | County | United States | 2012 TIGERLine + |
| <input checked="" type="checkbox"/> | 2012 | Census Tract | United States | 2012 TIGERLine + |

NHGIS data finder

Filter - Options - Review

Apply Filters [How to use the data finder \(pdf\)](#)

Geographic Levels: county or tract

Years: 1980 or 1990 or 2000 or 2008-2012

Topics: Age and Labor Force and Employment Status and Military Service and Race

Reset Filters

Data Select

- 2 source tables
- 0 time series tables
- 2 GIS boundary files

Choose selections [Continue](#)

Select Data

15 source tables 0 time series tables 8 GIS boundary files

| Popularity | Table Name | Universe | Classifications | Year - Dataset | Breakdowns |
|------------|--|--|--|-----------------|------------|
| 1 | ur1900: Population 16 to 19 Years by Race by Armed Forces Status | Persons 16 to 19 Years of Age | Labor Force, Employment and Armed Forces Status (2), Race (1) | 2000_SF3a | spatial |
| 1 | ur1901: Population 16 to 19 Years by Race by Armed Forces Status by School Enrollment | Persons 16 to 19 Years of Age | Labor Force, Employment and Armed Forces Status (2), Race (1), School Enrollment (2) | 2000_SF3a | spatial |
| 1 | ur1902: White Alone, Not Hispanic or Latino Population 16 to 19 Years by Armed Forces Status | White Alone, Not Hispanic or Latino Persons 16 to 19 Years of Age | Labor Force, Employment and Armed Forces Status (2) | 2000_SF3a | spatial |
| 1 | ur1903: White Alone, Not Hispanic or Latino Population 16 to 19 Years by Armed Forces Status by School Enrollment | White Alone, Not Hispanic or Latino Persons 16 to 19 Years of Age | Labor Force, Employment and Armed Forces Status (2), School Enrollment (2) | 2000_SF3a | spatial |
| 1 | ur1904: Population 18 Years and Over by Race by Sex by Age Groups by Armed Forces Status | Persons 18 Years and Over | Age (2), Labor Force, Employment and Armed Forces Status (2), Race (1), Sex (2) | 2000_SF3a | spatial |
| 1 | ur1905: Civilian Population 18 Years and Over by Race by Sex by Age by Veteran Status | Civilian Persons 18 Years and Over | Age (2), Race (1), Sex (2), Veteran Status (2) | 2000_SF3a | spatial |
| 1 | ur1906: White Alone, Not Hispanic or Latino Population 18 Years and Over by Sex by Age Groups by Armed Forces Status | White Alone, Not Hispanic or Latino Persons 18 Years and Over | Age (2), Labor Force, Employment and Armed Forces Status (2), Sex (2) | 2000_SF3a | spatial |
| 1 | ur1907: Civilian White Alone, Not Hispanic or Latino Population 18 Years and Over by Sex by Age Groups by Veteran Status | Civilian White Alone, Not Hispanic or Latino Persons 18 Years and Over | Age (2), Sex (2), Veteran Status (2) | 2000_SF3a | spatial |
| 1 | l2000a: Sex by Age by Veteran Status for the Civilian Population 18 Years and Over (White Alone) | White alone civilian population 18 years and over | Age (1), Sex (2), Veteran Status (2) | 2008_2012_AC55b | spatial |
| 1 | l2000b: Sex by Age by Veteran Status for the Civilian Population 18 Years and Over (Black or African American Alone) | Black or African American alone civilian population 18 years and over | Age (1), Sex (2), Veteran Status (2) | 2008_2012_AC55b | spatial |

